

Installation

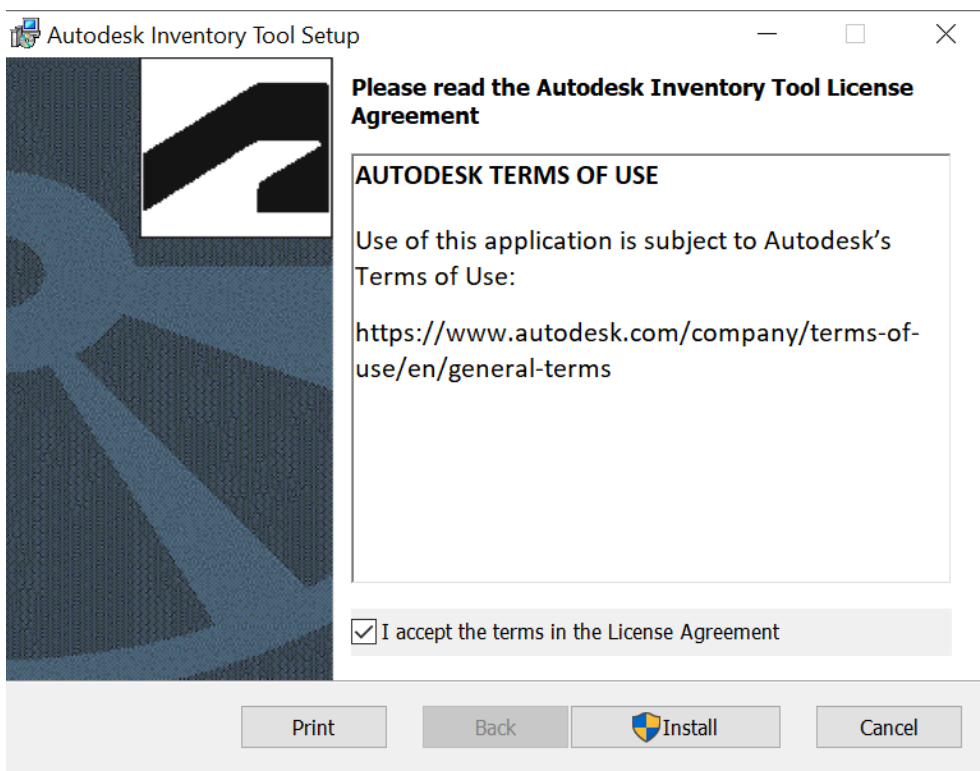
The Autodesk Inventory Tool installer is provided as a single Microsoft Installer (MSI) file. You can download the installer from the [AIT Installer](#) section.



✓ AIT.msi

To initiate the installation process, double click the **AIT.msi** installer file, this will start the setup wizard.

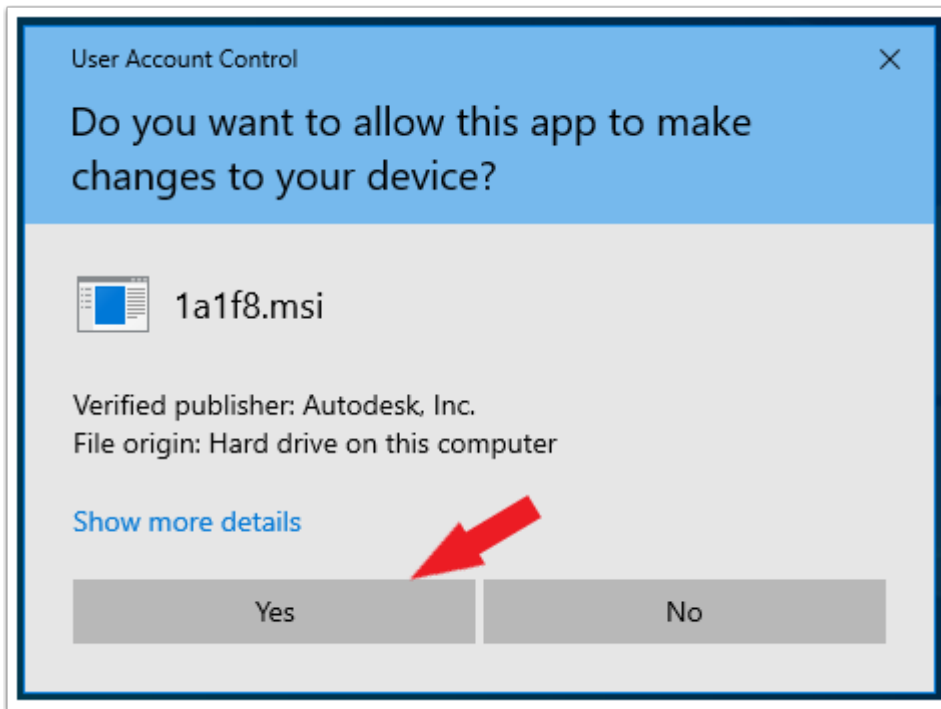
On the **AIT Setup** screen, review the license agreement, and if you accept the agreement, put a checkmark in the **I accept the terms in the License Agreement** checkbox and click **Install**:



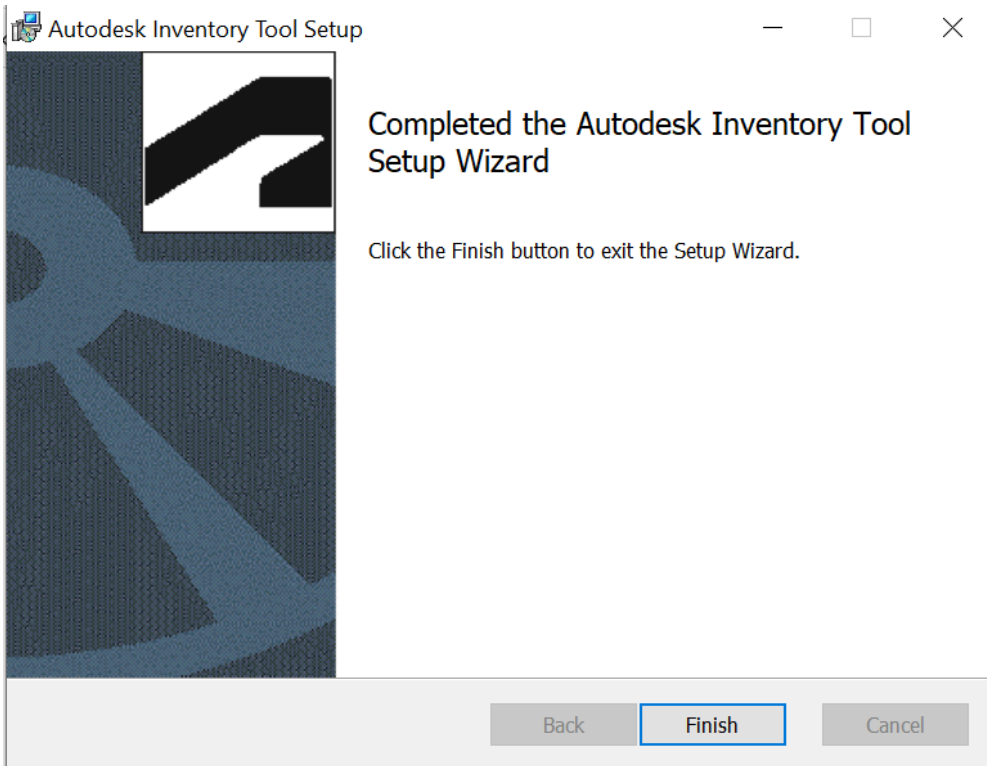
A link to the Autodesk Terms of Use can be found here:

<https://www.autodesk.com/company/terms-of-use/en/general-terms>

The installation will commence. If **User Account Control (UAC)** is enabled, a dialog will pop up asking **Do you want to allow this app to make changes to your device? Verified Publisher: Autodesk, Inc.,** click **Yes** to continue.



Once complete, click **Finish**:



Once complete, click **Finish**:

The setup process will place a shortcut to the AIT Windows interface on your desktop and within the Start menu:

